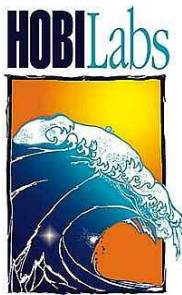


# SLS-1

## Stable Light Source

### USER'S MANUAL

Revision A1



---

**Hydro-Optics, Biology & Instrumentation  
Laboratories**

*LIGHTING THE WAY IN AQUATIC SCIENCE*

[www.hobilabs.com](http://www.hobilabs.com)

[support@hobilabs.com](mailto:support@hobilabs.com)

## **Revisions**

Initial release May 2005

Revision A, November 2007: Added Labsphere mounting description

Revision A1, December 2007: Corrected formatting

# Table of Contents

<b>INTRODUCTION.....</b>	<b>4</b>
SYSTEM COMPONENTS .....	4
CONTROLS AND CONNECTIONS.....	5
<i>Power</i> .....	5
<i>Thermal Control</i> .....	5
<i>Light Control</i> .....	6
<i>Output</i> .....	6
REAR PANEL CONNECTIONS .....	7
<b>USING THE SLS-1.....</b>	<b>8</b>
PRECAUTIONS.....	8
BASIC PROCEDURE .....	8
WARMUP .....	8
LED OPERATION .....	8
FIBER OPTIC COLLECTOR ATTACHMENT.....	9
HYDRORAD-E1 EMBEDDED COLLECTOR ATTACHMENT .....	10
INTEGRATING SPHERE ATTACHMENT .....	11
<b>USING THE SLS-1 WITH HYDRORADS AND RADSOFT .....</b>	<b>12</b>
INTRODUCTION.....	12
REQUIREMENTS FOR LIVE DATA COLLECTION .....	12
PREPARATION.....	12
CONNECT AND START RADSOFT .....	12
START COMPARISON WIZARD .....	13
TO COLLECT BASELINE DATA.....	14
TO COMPARE LIVE DATA WITH A BASELINE FILE .....	15

# Introduction

HOBI Labs' Stable Light Source (SLS-1) is for testing, in both the laboratory and the field, the stability of radiometric sensors. While ideal for use with HOBI Labs's HydroRad instruments, it is equally useful with various other sensors. The SLS-1 provides high stability by driving light emitting diodes (LEDs) at carefully controlled current in a thermally-stabilized optical head. The LEDs may be driven either in constant-current or constant-power mode. In constant-power mode the signal from a reference detector is used in a feedback loop to adjust the drive current and maintain constant optical output.

The SLS output spectrum typically contains five spectral peaks characteristic of the LEDs used. The LEDs are selected so as to provide broad spectral coverage, and are balanced to match the spectral response of the devices intended to be monitored.

## SYSTEM COMPONENTS

The SLS comprises an external power supply, electronic controller and optical head (shown in Figure 1), and one or more adapters for connecting the optical head to devices under test (DUTs).



**Figure 1 SLS Controller and Optical Head**

The optical head contains six LEDs, diffusing optics, a reference photodiode that monitors all the LEDs' optical output, a heating element, and temperature sensor. It is connected to the controller via a flexible shielded cable so it can be attached to various devices. We recommend leaving the cable connected whenever possible, to protect the LEDs against static discharges.

The controller contains four independent channels of circuitry to drive the LEDs and monitor their output. To allow independent monitoring and regulation of the four channels, the LEDs are modulated at different frequencies from 2 to 16 kHz, and synchronous detection circuits tuned to the different frequencies extract their signals from the composite reference detector output.

Adapters are used to attach the optical head to different devices under test. There are two types of adapters for HydroRads: one for collectors mounted on fiber optic cables (shown in Figure 4), and one for collectors embedded in the HydroRad (Figure 6). When properly used, these adapters provide very repeatable positioning of the light collectors with respect to the optical head.

## CONTROLS AND CONNECTIONS

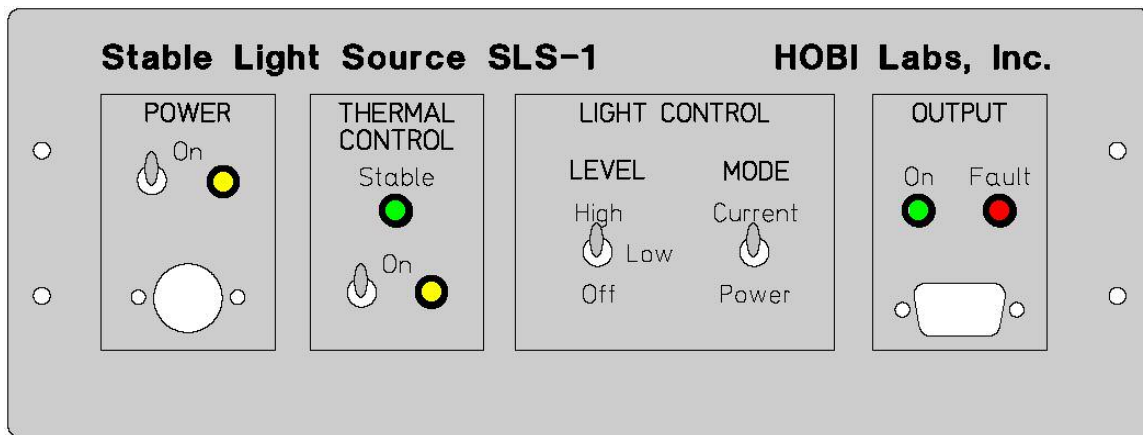


Figure 2 SLS Front Panel

### Power

The circular DIN-5 connector on the left of the front panel accepts power from the external power supply. **Use only the power supply that was provided with the SLS.** Other power supplies with DIN-5 connectors may not be compatible.

Do not use the main power switch to turn the LEDs on and off for short periods, since the unit must stabilize each time it is turned on. To turn the LEDs on and off while maintaining stability, use the Light Control / Level switch.

### Thermal Control

The toggle switch turns on or off the feedback-regulated heater in the optical head. The yellow light indicates when heat is being applied to the head. Note that it normally dims when the head reaches its stable temperature. The green "Stable" light indicates that the optical head is at its target operating temperature and the unit is ready for use. It typically takes 5 to 10 minutes for the head to warm up to this temperature from a room temperature of 20 to 25C.

The LEDs can operate safely without the thermal control turned on, but maximum stability is ensured only when the thermal control is on and stable.

## Light Control — Level and Mode

The three-position **Level** switch selects the amount of current sent to the LEDs. The “Low” level is approximately  $\frac{1}{4}$  of the “High” level. Both levels have the same regulation and stability. The “Off” position completely disables the LEDs for dark measurements.

The **Mode** switch selects how the LED drive level is regulated. In power mode, which is the normal mode for sensor stability testing, the signals from the reference photodiode in the optical head are used to adjust the current as necessary to achieve constant optical output. In current mode the LED drive currents are held constant regardless of reference readings. Because it is especially important not to accidentally switch between these modes, the switch has a locking toggle that must be pulled out in order to change its position.

It is important to use power mode for long-term stability monitoring because as LEDs age, their efficiency decreases gradually, and the current must be increased slightly in order to maintain constant power output. In power mode this adjustment is performed constantly to provide ultra-stable output.

Note that in power mode, reflection from the device being tested can have a slight effect on the SLS output. This is not important for the typical application where a certain device is tested repeatedly in a consistent configuration, and presumably the device’s reflectivity will not change between tests. However, if the SLS is used for other applications, the user may need to be aware of this effect. If the device under test is highly reflective, a few percent of the light reflected back into the head will be picked up by the reference detector. In order to keep the signal on the reference detector constant in the presence of this reflected light, the feedback circuit will decrease the LED output slightly. Again, this effect is completely repeatable so it is not important if the reflectivity of the device is approximately constant.

Current mode maintains constant current to the LEDs. This mode does **not** compensate for changes in LED efficiency, and thus is not suitable for long-term stability testing. It is only suitable for special circumstances or troubleshooting.

## Output

A high-density D-Sub 15-pin connector is used to attach the head to the controller. We recommend leaving the cable and head attached to this output whenever possible, to protect the LEDs in the head against transients and static discharges.

The green “On” indicator should light whenever the Light Control Level switch is on. The red “Fault” indicator should never come on during normal operation. If it does, it indicates that one or more of the LEDs have failed, or there is a bad connection between the controller and optical head. If the fault light turns on more than momentarily, we advise you to contact HOBI Labs technical support for guidance on avoiding possible damage.

## REAR PANEL CONNECTIONS

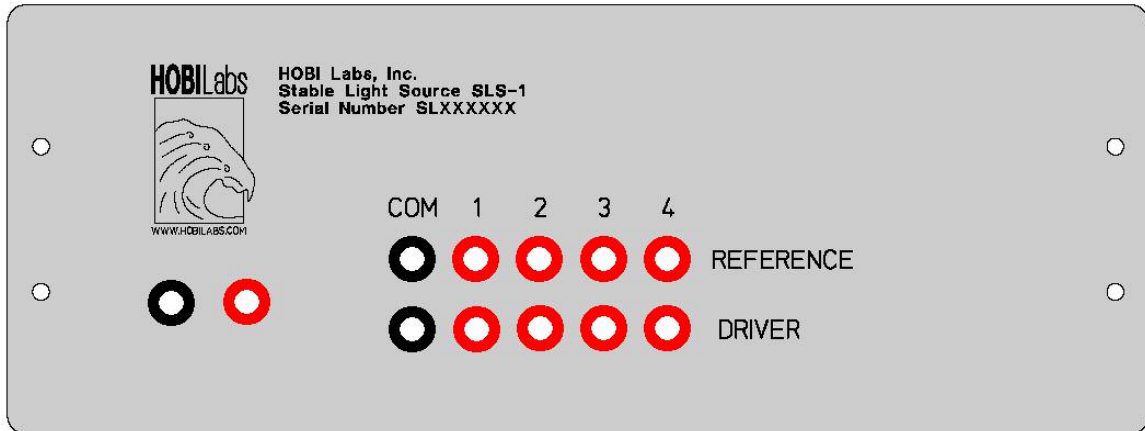


Figure 3 SLS Rear Panel

The connections on the rear panel are not needed for routine use, but can be used to monitor the operation of the SLS itself. The Reference outputs produce DC voltages that indicate the measured optical output of each of the four channels. In constant-power mode these outputs should remain constant. The driver (labeled “current” in later units) outputs indicate the current being sent to each channel, and should remain constant in constant-current mode.

The left-most jacks carry the set-point voltage and actual voltage for the temperature sensor. When the green “Stable” light on the front panel is on, these should be within 10 millivolts of each other.

The reference, driver and temperature outputs of each SLS unit are measured at HOBILabs before shipment for purposes of monitoring the SLS’s long-term stability.

# Using the SLS-1

## PRECAUTIONS

- Use only the power supply provided with your SLS.
- Do not detach the optical head from the controller.
- Use only your fingers to tighten the screws that attach the optic head, adapters and collectors.
- Do not open the controller box.
- Do not run the LEDs more than is necessary to perform your measurements.
- Do not run the LEDs if the red “Fault” light turns on when you do.
- Keep the system clean and dry.

## BASIC PROCEDURE

- Turn on the thermal control and allow time for it to stabilize
- Clean the window of the optical head
- Select an adapter appropriate to the device under test (DUT)
- Ensure the mating surfaces of the optical head, adapter and DUT are free of debris or defects that could interfere with their mechanical positioning
- Attach the optical head to the adapter
- Attach the adapter to the DUT
- Check the Light Control settings to make sure they are appropriate and consistent with the settings used for previously collected data.

## WARMUP

It takes at least a few minutes, typically 5 to 10, for the thermal controller to reach its stable operating point. The green “Stable” light is your assurance that it is warmed up and ready for use.

## LED OPERATION

To give the LEDs their maximum stable life you should ordinarily turn them on after the thermal controller has stabilized and you are nearly ready to collect data. There is a slight warmup effect due to the LEDs’ internal heating, but this takes only a few seconds to reach its stable operating point.



## FIBER OPTIC COLLECTOR ATTACHMENT

Figure 4 shows the adapter for mounting HOBI Labs fiber optic collectors to the SLS optical head. The left panel shows the side to which the head attaches. Three metal alignment pins ensure stable, repeatable mating of the head to the adapter, which is then secured in place with hand-tightened screws. The right panel shows the side into which the fiber optic collector is inserted and secured.

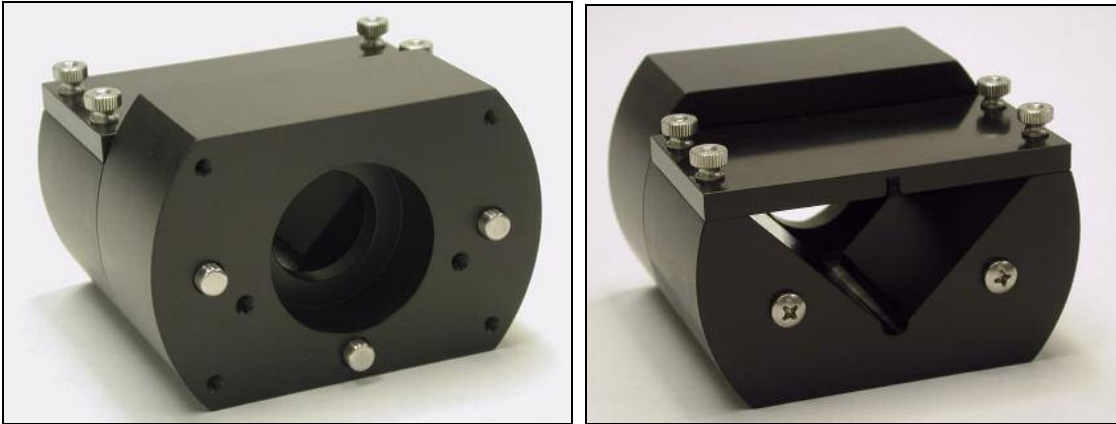
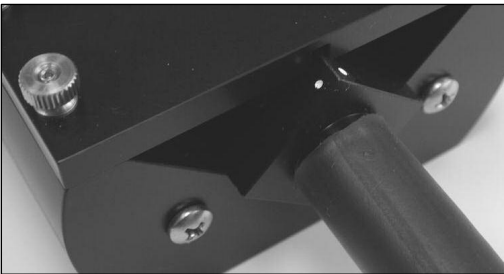


Figure 4 Mounting Adapter for Fiber Optic Collectors



For best repeatability it is important to insert collectors in a consistent orientation. To facilitate this, collectors may have a pair of white dots marked on them. These dots should always be facing up, that is, toward the flat top plate, as shown in Figure 5.

Figure 5

Figure 5 Fiber Optic Collector Orientation

To attach a fiber optic collector:

- Ensure the surfaces of the collector body are clean and smooth.
- If the collector has a copper face, remove any dark corrosion by lightly sanding it (without scratching the window).
- Clean the window or diffuser of the collector with isopropyl alcohol or an alcohol-based lens-cleaning solution, and dry it. **Do not use acetone or other solvents.**
- Loosen the four screws on top of the adapter so the collector body can slide freely in.
- Insert the collector, in the correct orientation, until it reaches a hard stop.
- Firmly press the collector against the stop while hand-tightening the screws on the flat plate.

## HYDRORAD-E1 EMBEDDED COLLECTOR ATTACHMENT

The embedded collector adapter fits entirely over the end of a HydroRad-E1 or –ES1. To achieve the best alignment, be sure the mating parts of the adapter and the face of the HydroRad are clean. Align the adapter carefully before pressing it into place. The adapter and instrument have white dots (visible in Figure 6) to assist with this alignment.

For the HydroRad-ES1, be especially careful not to apply force to the rotating part of the copper shutter while placing the adapter on the instrument.



**Figure 6 Mounting Adapter for HydroRad-ES1**

After mounting the adapter to the HydroRad, align the SLS head with the three metal alignment pins on the adapter, press it firmly in to place, and hand-tighten the four retaining screws that hold the head onto the adapter.



**Figure 7 SLS head mounted on HydroRad-ES1**

## INTEGRATING SPHERE ATTACHMENT

With an appropriate adapter ring, the SLS head can be attached to a 1-inch port on a Labsphere™ integrating sphere. The SLS adapter ring, like Labsphere's standard port attachments, is held onto the port with set screws that grip the port ring. These screws are tightened with a 0.035" hex key, as shown in Figure 8. Note that the sphere mounting ring can be damaged by excessive force on the screws or the mounted SLS head.

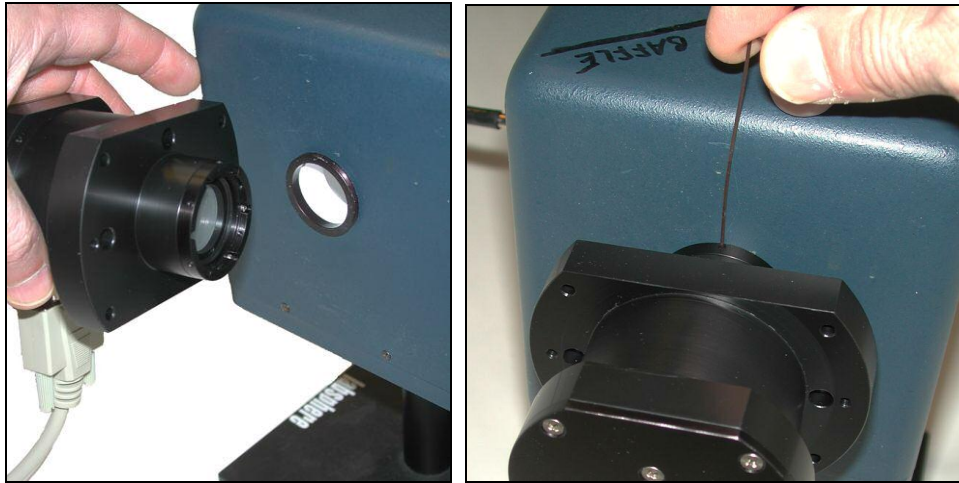


Figure 8 Mounting on a Labsphere port



# Using the SLS-1 with HydroRads and RadSoft

## INTRODUCTION

The HOBI Labs software package RadSoft (version 1.08 and later), includes a Calibration Comparison Wizard that works in conjunction with the SLS to facilitate monitoring of HydroRad calibrations. It provides functions to

- Measure baseline HydroRad responses
- Compare live HydroRad data with recorded baseline data
- Compare data saved in files with baseline data.

For comparison, RadSoft calculates the percentage differences between two spectra within discrete wavebands that are defined in a configuration file delivered with the SLS.

## REQUIREMENTS FOR LIVE DATA COLLECTION

- HydroRad to be tested, power/data interface (PDI) cable, and external power supply if the HydroRad is not equipped with batteries.
- Appropriate adapter for connecting SLS Optical Head to HydroRad fiber optic collectors and/or integrated collectors
- Computer with an available RS-232 COM port
- RadSoft software, installed
- A laboratory environment with moderate room temperature (approximately 25 C)

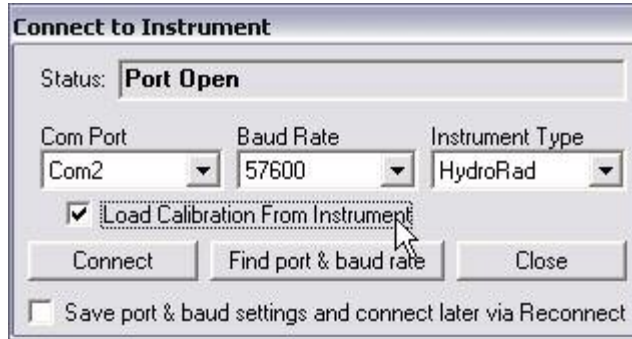
## PREPARATION

- Allow the HydroRad to assume room temperature.
- Turn on the SLS's main power switch, and Thermal Control switch. Wait for the Stable light to turn on, indicating the thermal controller has reached its equilibrium temperature.
- Attach the SLS optical head to the appropriate adapter, and attach the adapter to the first collector to be tested.
- Turn on the LEDs with the "Level" switch on the SLS. For most purposes the light level should be set to "High".

## CONNECT AND START RADSOFT

- Connect the HydroRad to the computer and power supply.

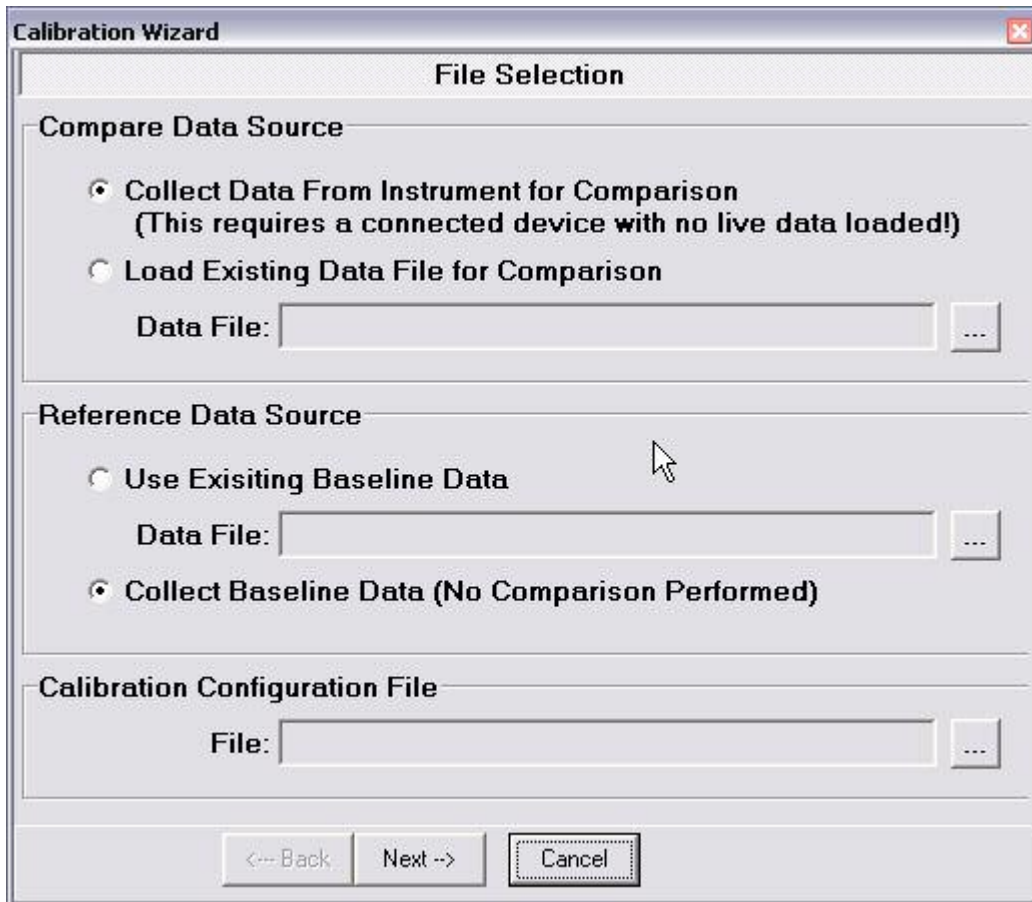
- Start RadSoft
- Select **File**→**Connect**



- If this is the first time you have connected this HydroRad to this computer, select **Load Calibration From Instrument**.
- Click **Find port & baud rate** and wait for the connection to complete.

## START COMPARISON WIZARD

- Select **File**→**Compare Calibrations...** The Calibration Wizard dialog box, shown below, will open.



## TO COLLECT BASELINE DATA

Baseline data are saved for later comparison with new instrument data.

- Under **Compare Data Source**, select the option **Collect Data From Instrument For Comparison**
- Under **Reference Data Source**, select **Collect Baseline Data**
- Click **Next**.
- Explanatory messages will be displayed. Click **Next**.
- The **Select Parameters** panel will be displayed.
- Select the channel to be tested.
- Under **Channel Settings**, select **Auto Integration Time**, **Collect Separate Dark Spectra**, and **Average Multiple Spectra**. We recommend averaging 10 samples. Click **Next**.

The screenshot shows a dialog box titled "Calibration Wizard" with a sub-header "Select Parameters". It contains two main sections: "Select Channel to Collect" and "Channel Settings".

**Select Channel to Collect:**

- HydroRad HR990501 GdHigh
- HydroRad HR990501 GuHigh
- HydroRad HR990501 GdLow
- HydroRad HR990501 GuLow

**Channel Settings:**

- Auto Integration Time     Manual Integration time:  ms
- Collect Separate Dark Spectra
- Average Multiple Spectra:  samples

At the bottom, there are three buttons: "<-- Back", "Next -->", and "Cancel".

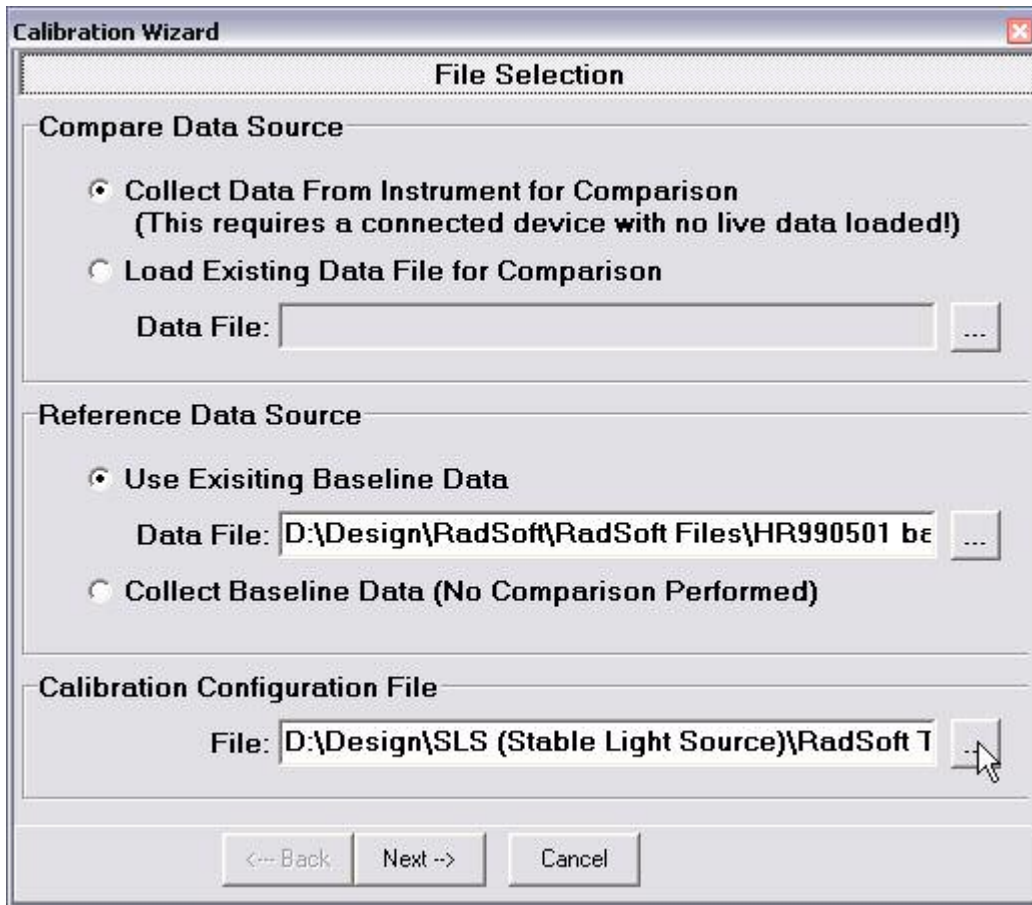
- Check that the SLS “Stable” light is still on, and that the optical head is properly connected to the light collector to be tested. If so, check the appropriate boxes in the dialog box and click **Next**. This will initiate data

collection. Note that the data collection time depends on the sensitivity of the HydroRad channel under test. Instruments set up for direct solar illumination may require several seconds for each of the 10 integrations.

- After the integrations have been selected, RadSoft will instruct you to turn off the light source. Set the “Level” switch on the SLS to “Off” and click **OK** to the following prompt(s).
- Wait for the data collection to complete. Depending on the relative positions of the windows on your screen, you may need to click the **Bring Graph to Front** button in the wizard to see the data. To switch between the light and dark integrations, click on the slider control below the graph.
- Click **Save Graph Data** in the Wizard window, and save the data file in the standard Windows manner.
- To collect additional data, click **Back**. The graph will close, and if you did not save the data above, you will be asked whether you wish to save the data first.

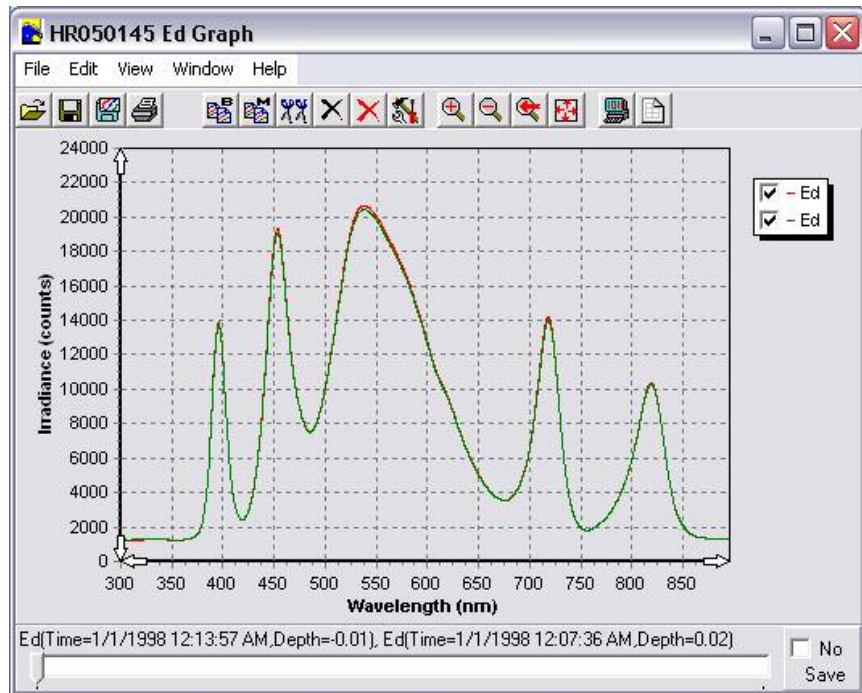
#### **TO COMPARE LIVE DATA WITH A BASELINE FILE**

- In the **File Selection** panel of the Wizard dialog box, select **Collect Data From Instrument For Comparison and Use Existing Baseline Data**.
- Click “...” under **Reference Data Source** to select a data file for comparison.
- Under **Calibration Configuration File**, click “...” and select the “.SLS” file that was included with your SLS.



- Click **Next**.
- In the **Select Parameters** panel of the Wizard dialog box, the channel that was measured in the baseline file you specified should be selected, and the manual integration time should also be set to match the previously collected data. You may need to set the number of samples to average.
- Click **Next**.
- Confirm that the setup is ready for data collection. You may need to turn the LED Level back up on the SLS, if you had previously collected dark data. Click **Next**.
- Wait for data collection to complete, and turn off the LED Level when prompted to do so.
- At the conclusion of the test, the comparison will be displayed in graphical and text form.
- To save a text file summarizing the comparison, click **Save Comparison**





**Calibration Wizard**

**Data Comparison**

Peak	RMS Error	Median Error
UV (390-410nm)	1.3%	-1.2%
Blue (445-485nm)	1.3%	-1.2%
Green(500-620nm)	1.3%	-1.3%
White (440-660nm)	1.3%	-1.2%
Red (690-740nm)	1.9%	-2.1%
IR (810-850nm)	0.8%	-0.3%
Entire spectrum (390-850nm)	1.4%	-1.3%

Bring Graph to Front      Save Comparison

<-- Back    Next -->    Done